



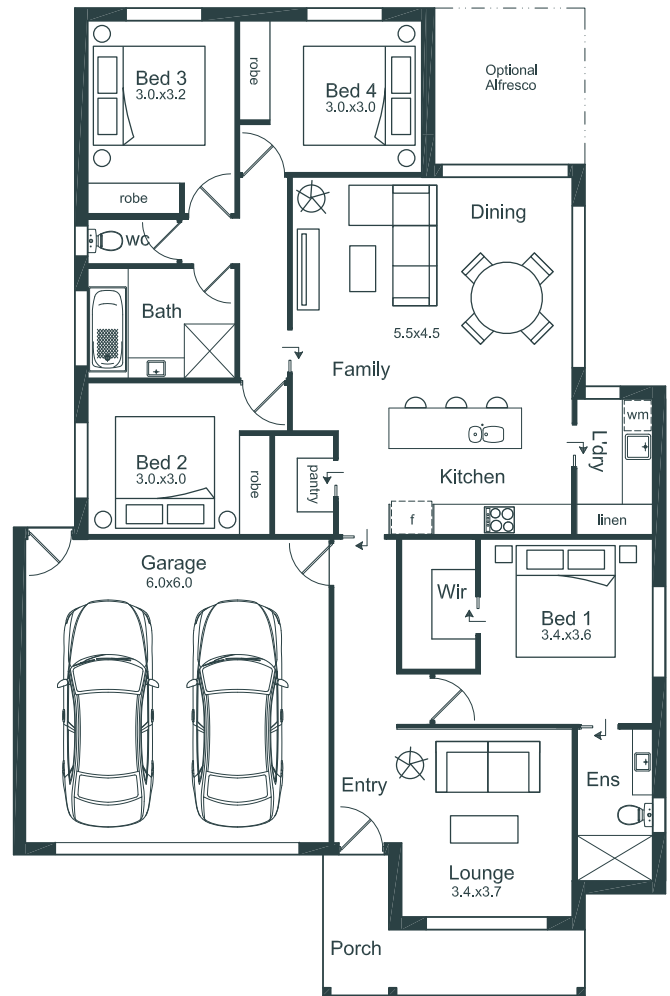
The Tatum



Living	180m ²
Garage	39m ²
Porch	9m ²

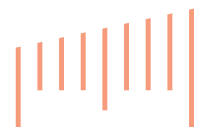
Key Features

- 4 Bedrooms
- Double garage
- Walk-in robe
- Walk-in pantry
- Alfresco area (optional).



For any enquiries please get in touch with
Steven Pinto (Owner & Builder)
 0416 454 555 or steven@metric.homes
www.metric.homes

Disclaimer. Dimensions on this design plan are primarily for marketing purposes.
 Dimensions tend to be approximate and will likely be subject to changes once we engage with you and the architect.



Metric Homes