



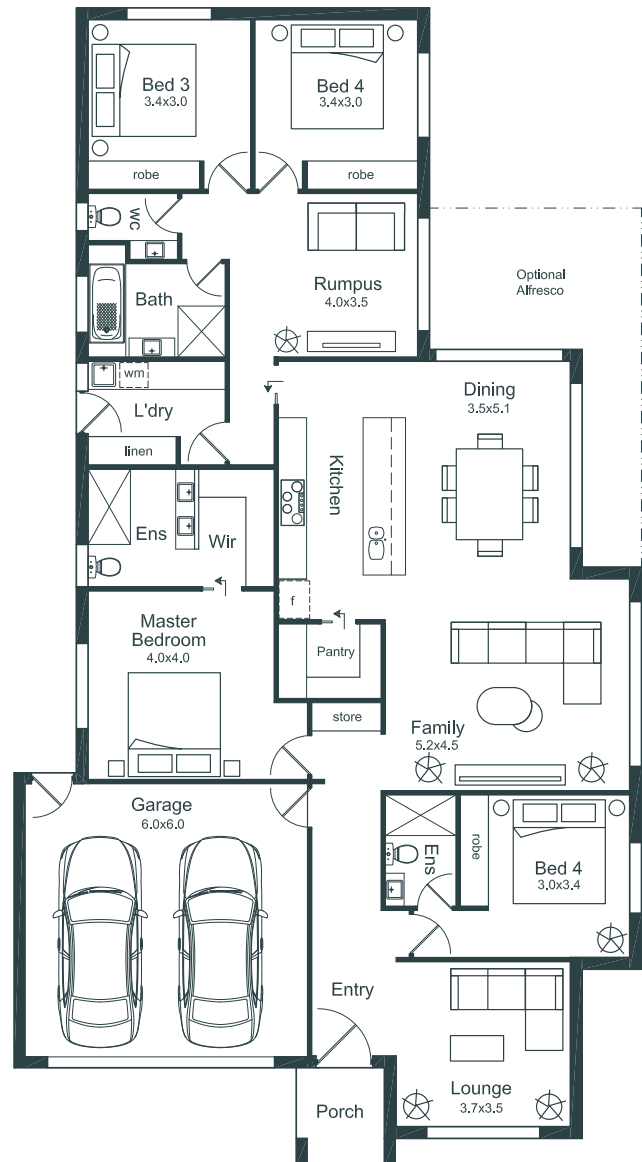
# The Nines



Living	205m <sup>2</sup>
Garage	38m <sup>2</sup>
Porch	4m <sup>2</sup>

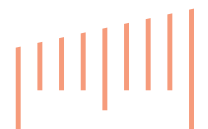
## Key Features

- 4 Bedrooms
- Rumpus room
- Double garage
- Walk-in robe
- Walk-in pantry
- Alfresco area (optional).



For any enquiries please get in touch with  
**Steven Pinto (Owner & Builder)**  
 0416 454 555 or [steven@metric.homes](mailto:steven@metric.homes)  
[www.metric.homes](http://www.metric.homes)

Disclaimer. Dimensions on this design plan are primarily for marketing purposes.  
 Dimensions tend to be approximate and will likely be subject to changes once we engage with you and the architect.



**Metric Homes**