



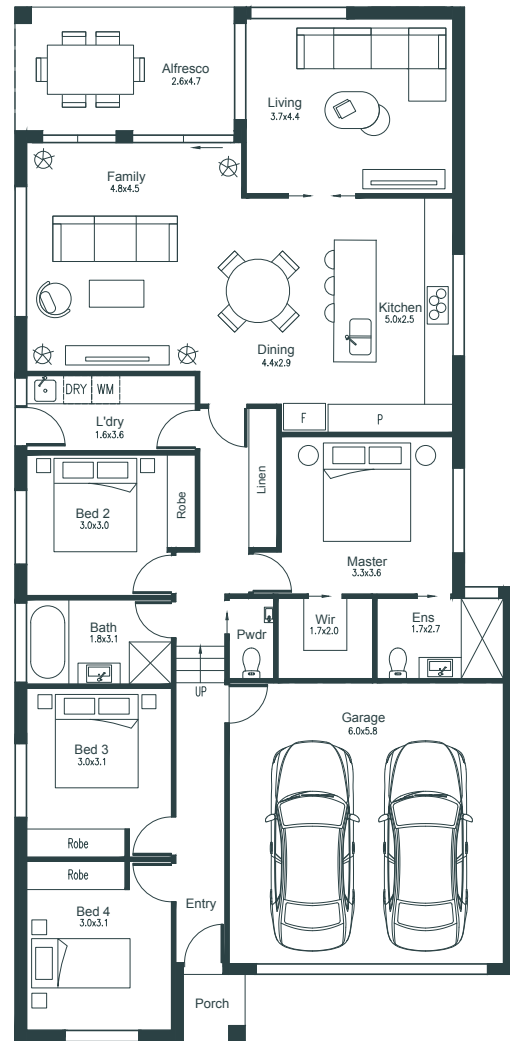
The Duella

 **4**
 **2.5**
 **2**

Block Size	350–372m ²
Living	162m ²
Garage	38m ²
Alfresco	12m ²

Key Features

- 4 Bedrooms
- Separate living
- Double glazed windows
- Double garage
- Walk-in robe
- Walk-in pantry
- Alfresco area.



For any enquiries please get in touch with
Steven Pinto (Owner & Builder)
 0416 454 555 or steven@metric.homes
www.metric.homes

Disclaimer. Dimensions on this design plan are primarily for marketing purposes.
 Dimensions tend to be approximate and will likely be subject to changes once we engage with you and the architect.



Metric Homes